

\$3,300 - 411 Duplex Ave 110, Toronto

MLS® #C5097783

\$3,300

Bedroom, 0.00 Bathroom, 1,500 sqft
Commercial

Lawrence Park South, Toronto, Ontario

Ideal Location For Doctors, Professional Services & Retail Opportunities. Located In The Heart Of Midtown Toronto This Lease Opportunity Is Accessible By The Inside Walk To Yonge/Dundas Subway Station. It Is Also Minutes From Cosmopolitan Downtown Core Of Toronto. Almost Perfect Walk Score Of 98 And A Transit Score Of 95 This Is A Highly Accessible Location For Staff And Clients Alike.

Essential Information

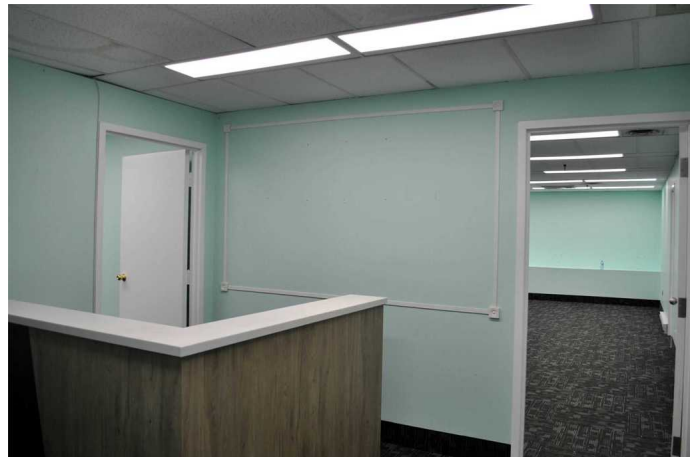
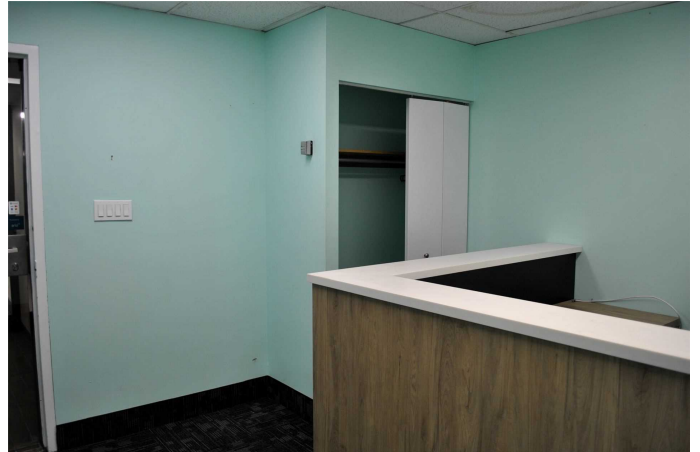
MLS® #	C5097783
Price	\$3,300
Bathrooms	0.00
Square Footage	1,500
Type	Commercial
Sub-Type	Lease
Status	A

Community Information

Address	411 Duplex Ave 110
Area	Toronto
Subdivision	Lawrence Park South
City	Toronto
Province	Ontario
Postal Code	M4R 1V2

Amenities

Utilities	Y
-----------	---



Features Unit Is Located Down The Hall Beside The Lcbo In The Yonge/Eglinton Centre. Turn Right At Shoe Repair And Unit Is Located At The End Of The Hallway

Garages None

Interior

Heating Gas Forced Air Open

Exterior

Lot Description 0.00x0.00 Feet

Additional Information

Zoning Commercial

Listing Details

Listing Office SUTTON GROUP QUANTUM REALTY INC., BROKERAGE

This website may only be used by consumers that have a bona fide interest in the purchase, sale, or lease of real estate of the type being offered via the website. The data is deemed reliable but is not guaranteed accurate by TREB.